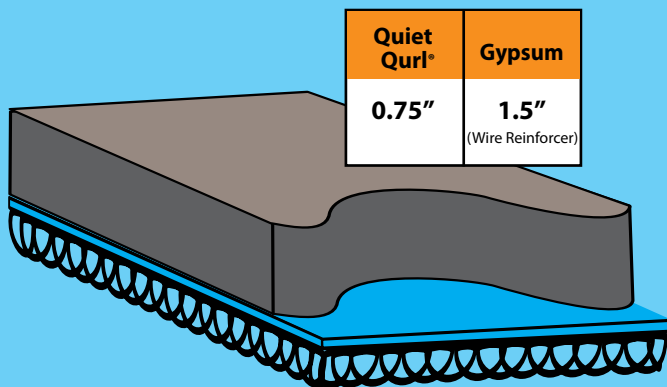
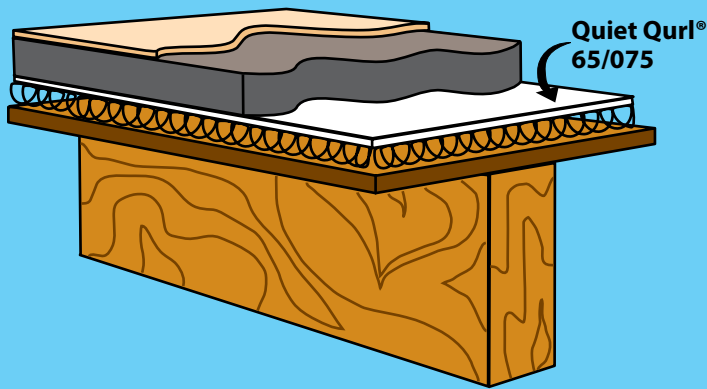
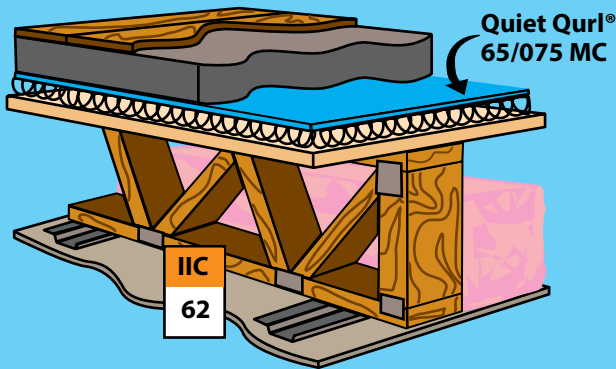


Quiet Qurl® 65/075



IMPACT SOUND CONTROL

Quiet Qurl® 65/075 Products are Ultra High Performance Sound Mats

Certain projects require that difference that will make them stand out. In multi-family the difference is the Quiet built into the project. Quiet Qurl® 65/075 has the extra thickness and is used with the extra mass of a 1.5" gypsum concrete (wire reinforced) underlayment. This system is the perfect solution for rehab loft projects. Overall Quiet Qurl® 65/075 can add 35 points in IIC over concrete and will perform 6 to 8 points higher than quarter inch mat.

Quiet Qurl® 65/075 Quiet Qurl® 65/075 MC

Features:

- Perfect solution for retrofit application in wood beam construction & poured concrete where noise issues are great.
- Random oriented monofilament design for the greatest resilience & highest noise control available.
- 2.25" (5.63 cm) profile is perfect for high ceiling loft look where height is not an issue.
- Zero moisture absorption in hydrophobic polymer core; no expansion or contraction with temperature & humidity

Tech Information:

- Polypropylene core polymer of tangled monofilaments
- Polypropylene fabric in white non-woven or [Blue Moisture Control](#) tri-laminate (non-woven, breathable membrane, non-woven) options

– CLASS A fire rated

Core thickness	(nominal)	0.75 in.	18.0 mm
Roll Width:		48.0 in.	122 cm
Roll Length:		50 ft.	15.2 m
Roll Weight:		29.0 lbs.	13.2 kg
Roll Diameter		23.0 in.	58.0 cm

Keene Building Products

Project Profile



MERIDIAN STREET LOFTS

Indianapolis, IN

Features:

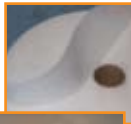
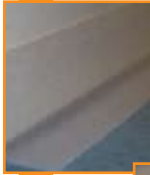
- Tri-con / CPM-Construction Planning & Management / Browning Day Mullins Dierdorf Architects
- FIRM-FILL Gypsum Concrete
- 32,000 Square Feet of Quiet Qurl® 65/075 MC

Quiet Qurl® 65/075 MC

Information:

The center of downtown Indianapolis is making the old new again. Indianapolis has so much to offer with countless attractions, dining, shopping, nightlife, sports, and now, living. Meridian Street Lofts is a newly renovated historic building that looks out into the Wholesale District, Conseco Fieldhouse and Circle Center Mall. The building is located at the corner of South Meridian Street and Georgia Street above the Smokey Bones Restaurant. It includes 18 condominiums (2nd – 4th floor) with 1,330 - 2,500 square feet, 14' ceilings, exposed wood columns and beams, and hardwood and ceramic tile floors. Keene Building Products has helped make it a success by using our impact sound mats.

Quiet Qurl® 65/075 MC was installed as a sound and moisture control mat which limits impact noise between floors. Quiet Qurl® 65/075 MC is a 0.75 inch thick mat produced from an extruded polymer matrix of tangled monofilaments which is laminated to a breathable membrane to help absorb noise and control moisture. Quiet Qurl® 65/075 MC was laid directly over old wood plank, with the black mesh side down and the blue fabric side up. The seams were taped and our Perimeter Isolation (Keene accessory product) was wrapped around all walls, penetrations and pipes. FIRM-FILL Gypsum Concrete was dumped 1.5" thick with wire reinforcement for added flexural and strength.



Perimeter Isolation



PHYSICAL PROPERTIES 65/075 MC

DESCRIPTION	MEANS OF MEASUREMENT ENGLISH/METRIC		VALUE ENGLISH/METRIC	
CORE POLYMER	POLYPROPYLENE			
THICKNESS	Inch	mm	0.75	19.0
TOTAL WEIGHT	oz/yd ²	g/m ²	19.7	550
CORE WEIGHT	oz/yd ²	g/m ²	16.7	475
FABRIC WEIGHT	oz/yd ²	g/m ²	3.0	75

PHYSICAL PROPERTIES 65/075

DESCRIPTION	MEANS OF MEASUREMENT ENGLISH/METRIC		VALUE ENGLISH/METRIC	
CORE POLYMER	POLYPROPYLENE			
THICKNESS	Inch	mm	0.75	19.0
TOTAL WEIGHT	oz/yd ²	g/m ²	20.7	590
CORE WEIGHT	oz/yd ²	g/m ²	16.7	470
FABRIC WEIGHT	oz/yd ²	g/m ²	3.5	120

Installation Instructions



Creating COMFORTABLE Space™

877 514 5336
P: 440 605 1020
F: 440 605 1120

P.O. Box 241353
Mayfield Heights, Ohio 44124
Info@KeeneBuilding.com
www.KeeneBuilding.com